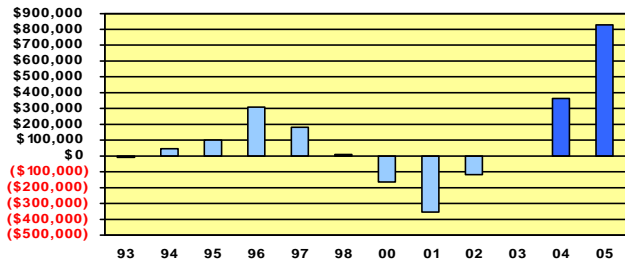


Key Performance Indicators American Accounting Association After Fiscal Year Ending 8/31/05

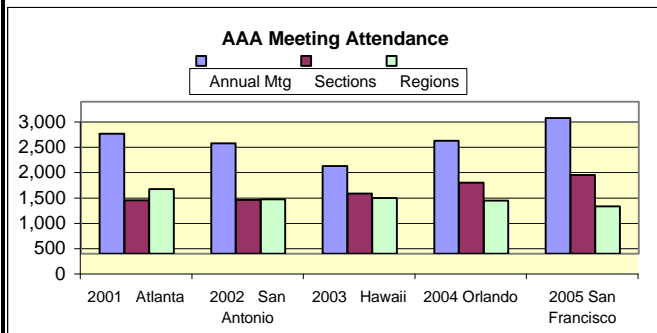
HISTORY OF CHANGES IN UNRESTRICTED NET ASSETS



Note that dues increases were imposed in 1996 and 2004, a budget crisis occurred in 2001 and cost controls resulted in a breakeven budget in 2003. Included in the 2005 surplus of \$828K is \$555K of journal aggregator royalty revenue designated by the E.C. for future needs.

Unrestricted Net Assets at	8/31/2005	8/31/2004
General Fund	\$1,887,428	\$1,059,850
Acct. Behavior & Org. Section	\$66,155	\$67,174
Accounting Programs Leadership Group	\$91,650	\$71,238
American Taxation Association	\$84,921	\$66,347
Artificial Intelligence Section	\$37,080	\$47,436
Auditing Section	\$195,294	\$162,627
Diversity Section	\$16,515	\$12,724
Financial Accounting & Reporting Section	\$145,999	\$153,422
Gender Issues Section	\$19,247	\$18,346
Government & Non-Profit Section	\$16,051	\$19,828
Information Systems Section	\$84,904	\$89,964
International Accounting Section	\$105,690	\$109,107
Management Accounting Section	\$53,862	\$62,593
Public Interest Section	\$21,830	\$19,783
Teaching & Curriculum Section	\$100,822	\$96,667
Two Year College Section	\$6,951	\$8,279
Mid-Atlantic Region	(\$6,285)	\$6,127
Midwest Region	\$53,303	\$47,049
Northeast Region	\$39,720	\$38,544
Ohio Region	\$17,877	\$10,284
Southeast Region	\$71,781	\$66,836
Southwest Region	\$10,026	\$9,422
Western Region	\$16,747	\$21,450
Total all funds	\$3,137,568	\$2,265,097

The fiscal year ending 8/31/05 showed an overall balance sheet improvement for the association as a whole. New contracts with journal aggregators Proquest and Ebsco were negotiated and will result in guaranteed royalties of \$350K per year, for four years, which has been designated by the Executive committee for future infrastructure, consulting services and other support for the AAA journal collection. Net inflows from the three main journals were higher than predicted and admin. expenses were less than budgeted.

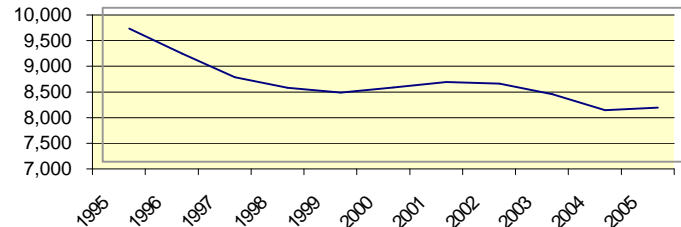


San Francisco attracted the highest Annual Meeting attendance in recorded history -- 2,681. Upcoming Annual Mtgs. will be in Washington, Chicago, Anaheim, New York

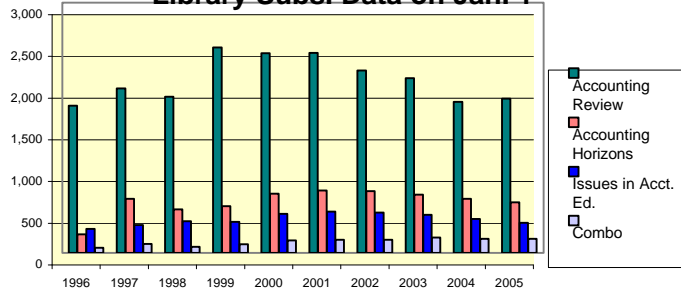
MEMBER DATA AS OF AUGUST 2005

	Academic	Practitioner	Emeritus	Life	Associate	Total
1995	7,085	1,421	231	83	777	9,597
1996	6,933	1,301	235	86	550	9,105
1997	6,591	1,145	212	105	593	8,646
1998	6,417	1,068	219	102	636	8,442
1999	6,473	965	207	94	610	8,349
2000	6,528	975	207	117	621	8,448
2001	6,643	972	217	130	594	8,556
2002	6,557	897	239	138	688	8,519
2003	6,373	810	238	146	750	8,317
2004	6,026	734	245	151	847	8,003
2005	6,019	676	209	235	918	8,057

AAA Membership History



Association-wide Journals Library Subs. Data on Jan. 1



The membership chart above shows a steady decline in membership from year to year with the exception of a temporary influx of new members in the 2001-02 period when membership promotion campaign was initiated with the help of a marketing company. The decline in membership was abated in 2005 by the number of new members attending the Annual Meeting and the increase in associate members in the past year. The library subscription chart shows a consistent decline in subscriptions to hard copy association-wide journals which will change with the advent of electronic library access.

Member Composition Trend

