

# The Eleventh International Conference of *the Journal of International Accounting Research (JIAR)*

June 20-22, Taipei, Taiwan

**Program Organizer:**

American Accounting Association, International Accounting Section

**Local Organizer and Financial Sponsor:**

National Taiwan University

**Conference Venue:** Regent Taipei Hotel

**Doctoral Consortium Venue:** College of Management, National Taiwan University



# National Taiwan University



- Established in 1928: over 5,727 number of faculty and staff members , over 35,043 number of students.
- NTU was ranked 69<sup>th</sup> worldwide in the QS World University Rankings 2024.
- NTU has three main campuses within Taipei City and several branch campuses and sites across Taiwan, covering a total area of over 340 square kilometers (34,000 hectares), equivalent to 1% of Taiwan's total land area.
- For more information, please visit:  
<https://www.ntu.edu.tw/english/>

01

## Data NTU

Established in **1928**Campus Area **34,151 ha<sup>1</sup>****1** Affiliated Hospital<sup>2</sup> **4** Library<sup>3</sup>

Note:

1. NTU campus occupies 1% of the land area of Taiwan
2. NTU Hospital: Jin-Shan Branch, Bei-Hu Branch, Hsin-Chu Branch, Chu-Tung Branch, Yun-Lin Branch, NTU Cancer Center Branch
3. Libraries (Main Library, Koo Chen-Fu Memorial Library, Medical Library, Law Library)

**16** Colleges<sup>4</sup>**58** Bachelor's Degree Programs<sup>5</sup>

Note:

4. Including the International College, D-School, Graduate School of Advanced Technology, Center for General Education, and School of Professional Education and Continuing Studies
5. Including 56 departments and two independent degree programs
6. Including 51 combined department/graduate institutes, 57 independent institutes, 34 degree programs, as well as four business administration programs: the EMBA program, the NTU-Fudan program, the Global MBA program, and the Entrepreneurship and Innovation MBA

## Sharing of Educational Resources



## MOOCs

Over **1.3 million** enrollments  
more than **50,000** course completions

## OCW

**250** courses  
more than **18 million** visits

## NTU Campus in Taipei City

Main Campus / Shuiyuan Campus /  
Downtown Campus**146** Graduate Institutes<sup>6</sup>Students **35,043**

Undergraduates (Male) 9,540

Undergraduates (Female) 7,577

Master's Students (Male) 8,460

Master's Students (Female) 5,639

Doctoral Students (Male) 2,579

Doctoral Students (Female) 1,248



## Learning and Lifestyle

The Hope Scholarship grants NT\$ 60,000-100,000 to freshmen in their first year (NT\$ 100,000 to low income freshmen and NT\$ 60,000 to mid-to-low income freshmen and other disadvantaged students in special circumstances). Starting from their 2<sup>nd</sup> year of study, the students who are in the top 30% of their class in the previous academic year and meet the requirements of course selection regulations may continue to receive this scholarship each academic year (the scholarship would be provided each semester).

Student Associations: 426

26 student dormitories with a total of 12,000 beds



## Library Collection

The NTU Library collection contains over 4.3 million physical books, 3.5 million digital books, and 130,000 periodicals (including digital periodicals and open access digital periodicals), as well as more than 600 databases.

NTU Library launched the nation's first automated storage and retrieval system in October 2018. The system provides a high-density storage space sufficient to hold at least 1.2 million volumes. System users can obtain their desired volume within two minutes.

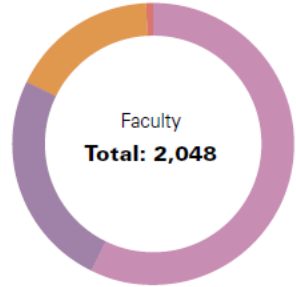




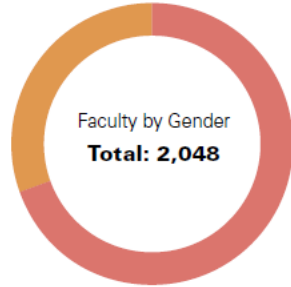
## Number of Faculty and Staff

Faculty and Staff **5,727** people

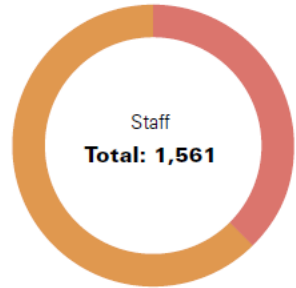
Note: Includes full-time faculty, adjunct faculty, staff, and contract employees



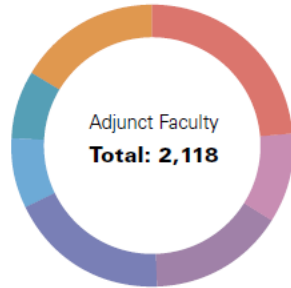
Professors	1,173	57%
Associate Professors	516	25%
Assistant Professors	343	17%
Lecturers	16	1%



Male	1,425	70%
Female	623	30%



Full-Time Staff (Including Rare Technicians)	589	38%
Contract Employees	972	62%



Adjunct Faculty	502	24%
Associate Professors	221	10%
Assistant Professors	325	15%
Lecturers	391	18%
Specialists and Teachers	171	8%
Research Fellows	166	8%
Clinical Teachers	342	16%

Data as of September 30, 2022

## Global NTU



- 4,020 international students from **89** countries (including international students, students from Mainland China, international degree students, dual degree students, exchange/visiting/short-term students, and Chinese language students)
- 642** partner universities
- 703** student exchange programs in **51** countries and **407** schools

## Social Responsibility



Every year NTU has over **50** social service teams which are joined by around 1,300 students and serve more than 4,000 people. Service hours surpass **76,000**.

## Worry-Free Learning

NTU used self-financing and fundraising drives to raise more than **NT\$ 400 million** for scholarships and grants (exclusive of all kinds of government grants, public scholarships and grants, and emergency aid), benefiting more than 15,000 students.



## Research Performance

Ranked in the **top 50** in nine academic disciplines

Ranking in QS's Five Main Subjects



World University Rankings

2023 Times Higher Education World University Ranking: **187**

2023 QS World University Ranking: **77**

# College of Management, National Taiwan University



- Established in 1948: over 327 number of faculty and staff members, over 3,914 number of students.
- College of Management was ranked 71<sup>st</sup> worldwide (Accounting & Finance) and 107<sup>th</sup> worldwide (Business & Management Studies) in the QS World University Rankings 2023.
- For more information, please visit: <https://management.ntu.edu.tw/en>

# DATA NTUCoM

## Founding Year 1948

- 1919 Original Taihoku College of Commerce, Government General of Taiwan was founded
- 1948 Department of Commerce was founded
- 1987 College of Management was founded after a period of restructuring

## Department and Graduate Institutes 5

- Business Administration
- Accounting
- Finance
- International Business
- Information Management

## Number of Students 3,914

## Master's Courses 3

- Executive Master of Business Administration (EMBA)
- Global MBA (GMBA)
- Entrepreneurship and Innovation MBA (EiMBA)

## Number of faculty and staff members 327

Full-time faculty, part-time faculty, and administrators

## Credit Courses 2

- Business Analytics
- Branding and Customer Management

## Awardees of NSTC Appointed Outstanding Research Award 4

- Awarded faculty:
- Mao-Wei Hung 2021
  - Ming-Hui Huang 2021
  - Juih-Biing Sheu 2021
  - Sheng-Syan Chen 2021

## Number of Case Publications 97

## Awardees of NSTC Ta-You Wu Memorial Award 18

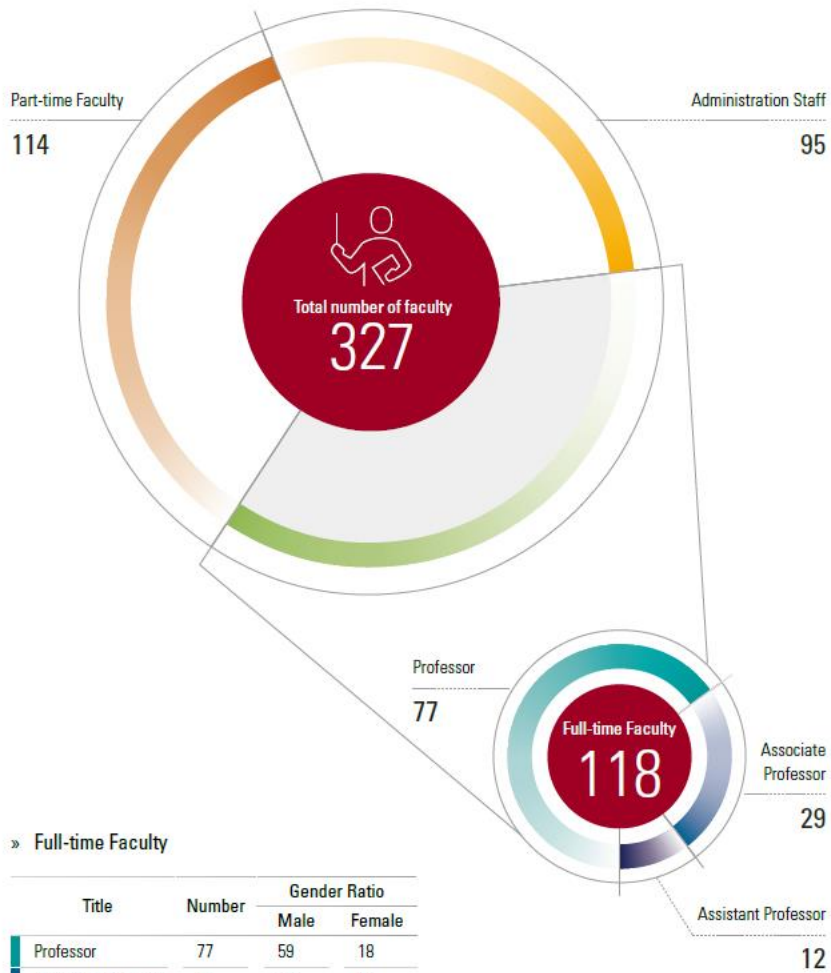
- Awarded faculty:
- Chen-Nan Liao 2022
  - Cheng-Wei Wu 2021
  - Ching-Hung Chang 2020
  - Chih-Hung Peng 2020
  - Sunny Yang 2019
  - Chia-Yen Lee 2017
  - Chia-Wei Kuo 2015
  - Wen-Hsin Hsu 2015
  - Yan-Zhi Wang 2012
  - Yen-Jung Lee 2011
  - Carol Hsu 2011
  - Bryan Jean 2011
  - Chun-Yao Huang 2008
  - Aichia Chuang 2007
  - Konan Chan 2005
  - Yi-Ting Chen 2004
  - Juih-Biing Sheu 2003
  - San-Lin Chung 2002

## Awardees of NSTC Outstanding Research Award 34

- Awarded faculty:
- Bing-Yu Chen 2022
  - Chih-Hung Peng 2022
  - Chia-Yen Lee 2021
  - Bryan Jean 2021
  - Kevin Tseng 2021
  - Shu-Cheng Chi 2020
  - Pei-Cheng Liao 2020
  - Yi-Ting Chen 2019
  - Bou-Wen Lin 2018
  - Aichia Chuang 2015
  - Juih-Biing Sheu 2014/2011/2006
  - Ming-Hui Huang 2013/2003
  - Yan-Zhi Wang 2013
  - Sheng-Syan Chen 2012/2009/2003
  - Yao-Min Chiang 2011
  - Yeh Shu 2010
  - Chih-Ping Wei 2010/2007
  - San-Lin Chung 2009/2002
  - Larry Tzeng 2007
  - Chi-Chun Liu 2006
  - Mao-Wei Hung 2004/1997
  - Houn-Gee Chen 2004
  - Luo Lu 1999
  - Ho-Mou Wu 1996
  - Chung-Min Kuan 1996/1994

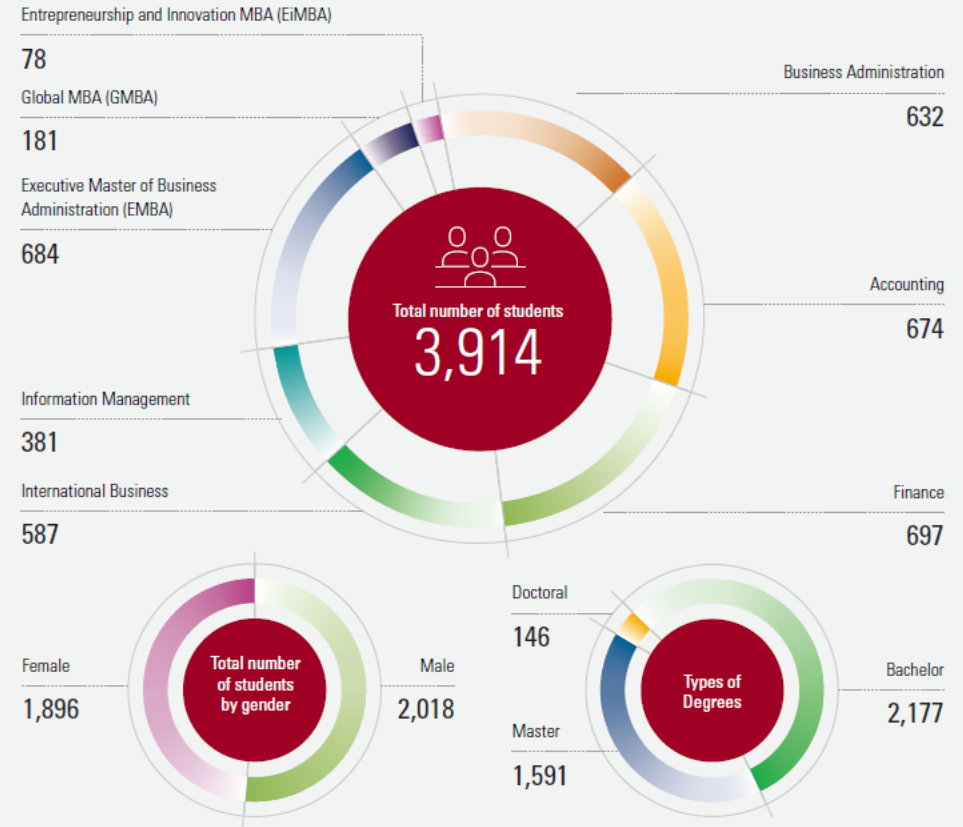


# DATA NTUCoM



## » Full-time Faculty

Title	Number	Gender Ratio	
		Male	Female
Professor	77	59	18
Associate Professor	29	19	10
Assistant Professor	12	6	6
<b>Total</b>	<b>118</b>	<b>84</b>	<b>34</b>



Department	Bachelor	Master	Doctoral	Male	Female
Business Administration	459	129	44	295	337
Accounting	558	99	17	295	379
Finance	530	145	22	347	350
International Business	405	141	41	241	346
Information Management	225	134	22	234	147
Executive Master of Business Administration (EMBA)		684		470	214
Global MBA (GMBA)		181		92	89
Entrepreneurship and Innovation MBA (EiMBA)		78		44	34
<b>Total</b>	<b>2,177</b>	<b>1,591</b>	<b>146</b>	<b>2,018</b>	<b>1,896</b>

# Doctoral and Early Career Consortium Venue

Located on the 3rd Floor of the NTU College of Management Building 1

**E.Sun Hall**



**6 E.Sun discussion rooms**





# Get to NTU

From Taoyuan International Airport to Central Taipei

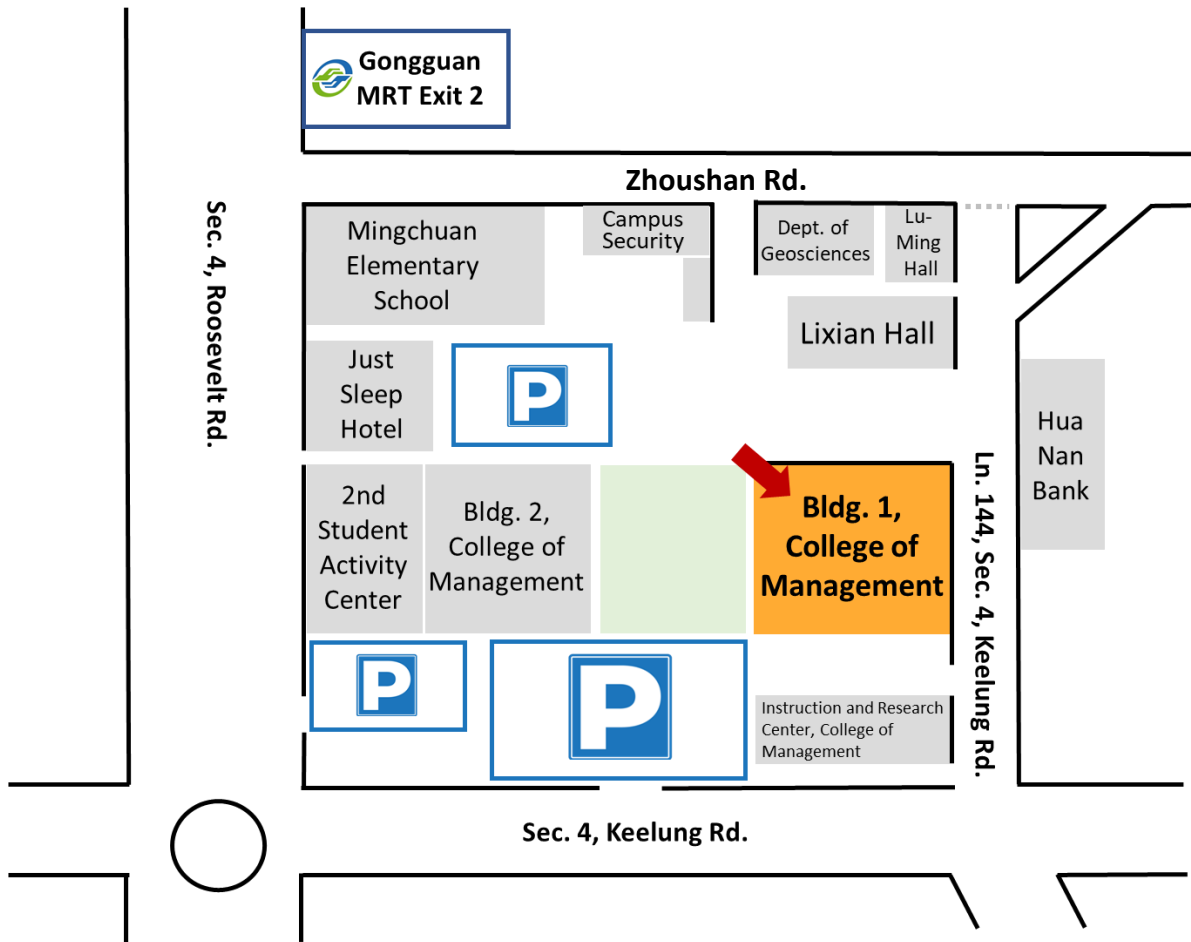
Most international flights land at Taoyuan International Airport (TPE). The journey from Taoyuan International Airport to central Taipei is about 40 kilometers.

Option	Route	Time (estimate)	Fare (estimate)
<a href="#">Taxi</a>	Taxis operating by shifts are located at the west side of Terminal 1's and 2's Arrivals Lobby, operating 24 hours a day. The cost is approximately between NT\$1,000 and NT\$1,300, but there may be an additional fee for rides after 11 PM.	1h	TWD 1,300
Bus→ Taxi	Take bus (Kuo-kuang Line 1819 or CitiAir Bus 1961) directed to Taipei Main Station (臺北車站), and then take a taxi.	1h30	TWD 350
Bus→ MRT	Take bus (Kuo-kuang Line 1819 or CitiAir Bus 1961) directed to Taipei Main Station (臺北車站), and transfer to MRT Songshan- Xindian Line (松山新店線), get off at Gongguan station (公館站).	1h30	TWD 220
<a href="#">Airport MRT→ MRT</a>	Take Taoyuan Airport MRT to Taipei Main station (臺北車站), and then take MRT Songshan-Xindian Line (松山新店線) to Gongguan Station (公館站).	1h30	TWD 200

Airport transportation : [www.taoyuan-airport.com/english/transportation](http://www.taoyuan-airport.com/english/transportation)

NTU Online Map : [www.ntu.edu.tw/english/about/location.html](http://www.ntu.edu.tw/english/about/location.html)

# Location



## Address:

**Building 1**, College of Management, National Taiwan University  
 No. 50, Lane 144, Section 4, Jilong Rd, Da'an District,  
 Taipei 10617, Taiwan

Click: [Google Map](#), [MRT Route Map](#)

MRT	Exit 2, Gongguan Station, Songshan-Xindian Line
Bus	Route 1, 52, 74, 207, 208, 236, 251, 252, 253, 254, 278, 280, 284, 290, 311 505, 530, 606, 642, 644, 648, 660, 668, 801, 907, G1, G13 to MRT Gongguan Station

# Conference Venue: Regent Taipei Hotel

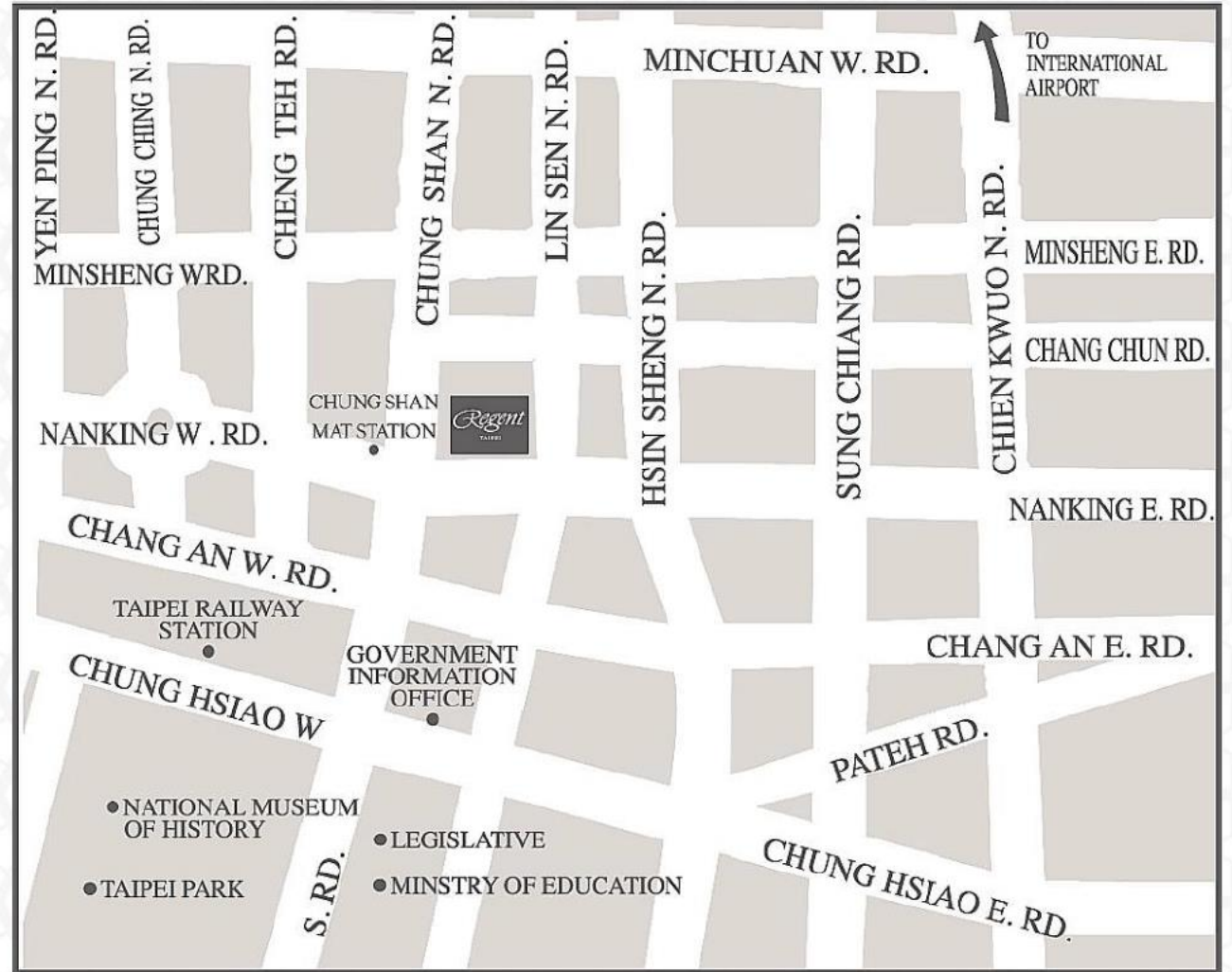




## LOCATION

Our superb downtown location is just a short walk from the city's main attractions and accessible via excellent transport links.

- In the heart of Taipei's main commercial district
- Overlooking the city and leafy parks
- 50-minutes drive from Taiwan Taoyuan International Airport
- 5-minutes walk to Zhongshan MRT station
- Easily accessible via the Taipei main railway station





## BRASSERIE

Enjoy the theater of an open kitchen and the sumptuous selection of Taipei's most renowned all-you-can-eat buffet. All-day dining revolves around refined cuisines from all over the world, including a full salad bar, made-to-order pasta and noodles, succulent seafood, a grand sushi bar serving the freshest sashimi, and abundant fusions of East and West, while a mouthwatering dessert selection offers sweet indulgence.



# Get to Regent Taipei Hotel

From Taoyuan International Airport to Central Taipei

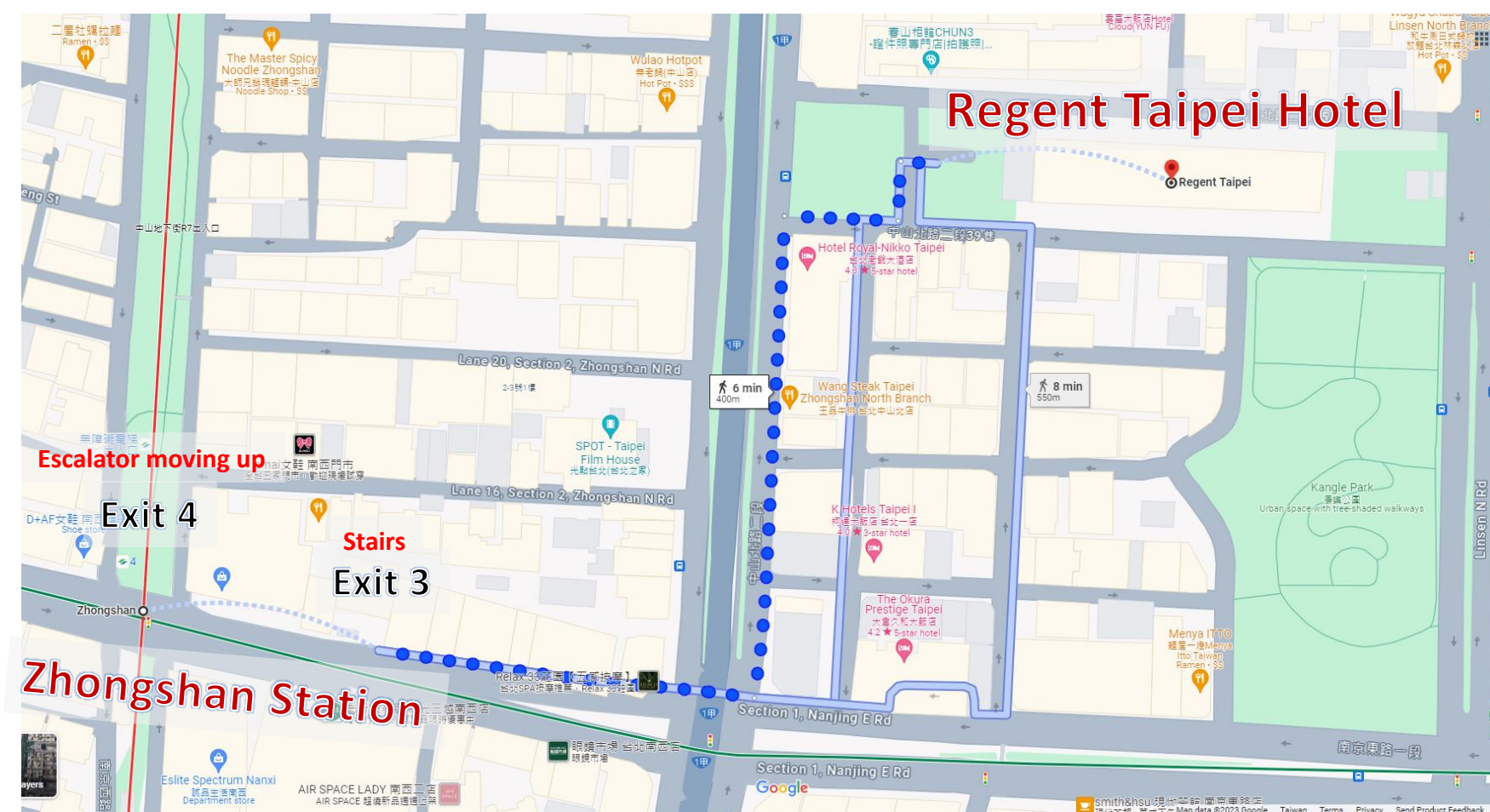
For guests arriving and departing by air, transfers to and from Taiwan Taoyuan International Airport —a 50-minute journey —can be arranged on request.

Option	Route	Time (estimate)	Fare (estimate)
<a href="#">Taxi</a>	The quickest way to get from Taiwan Taoyuan Airport (TPE) to Regent Taipei is to taxi which costs \$35 - \$50 and takes 50 min. There may be an additional fee for rides after 11 PM.	50 min	TWD 1,500
<a href="#">Bus</a>	Take bus (Kuo-kuang Line 1819 )directed to Ambassador Hotel station, and it's about a 5 min walk to reach your destination.	1h5	TWD 160
<a href="#">Airport MRT→ MRT</a>	Take Taoyuan Airport MRT to Taipei Main station (臺北車站), and then take MRT Tamsui–Xinyi Line (淡水信義線) to Zhongshan Station (中山站) .	1h5	TWD 200

Airport transportation : [www.taoyuan-airport.com/english/transportation](http://www.taoyuan-airport.com/english/transportation)

Regent Taipei Hotel : <https://www.ihg.com/regent/hotels/us/en/taipei/tperg/hoteldetail>





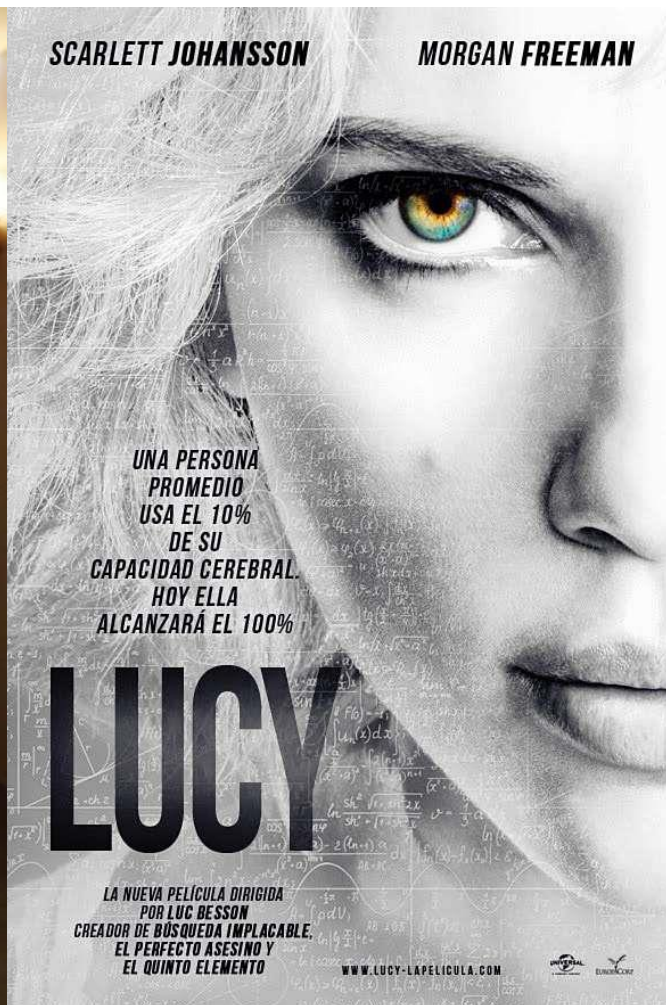
**Address:** No. 3, Ln. 39, Sec. 2 Zhongshan N. Rd., Taipei 104, Taiwan

**Click:** [Google Map](#), [MRT Route Map](#)

MRT	Exit 3 or 4, Zhongshan Station, Tamsui–Xinyi Line
Bus	Route 218、220、221、227、247、260、261、287、310、40、636、659 to Ambassador Hotel station, and it's about a 3-minute walk to reach your destination.



# “Lucy” Filmed at Regent Taipei





**See you in 2024!**

